

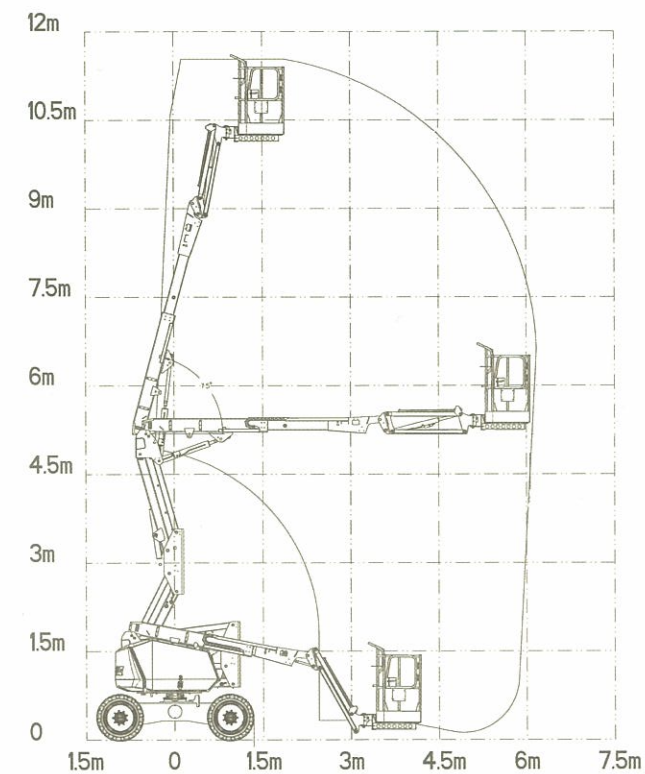
340AJ ARTICULATING BOOM LIFT



SPECIFICATIONS

MAIN FEATURES

- Smooth control, proportional hydraulic four-wheel drive
- Proportional lift and swing controls at the platform
- Oscillating front steer axle assists four-wheel drive traction
- Tight steering turning circle
- Jib boom and basket rotate
- Cylinder boots protect cylinder rods from overspray and contaminants
- Non-marking solid cushion flex-type tyres
- Multi-axis 3-degree tilt alarm/indicator light
- Plug-in JLG analyser at platform and base to indicate system functions for servicing and adjustment
- Tier 4 Kubota D1105, 17.8kW three-cylinder diesel engine with exhaust purifier



Due to continuous product improvements, JLG Industries reserves the right to make specifications and/or equipment changes without prior notification. For complete specifications visit www.jlg.com.au. Copyright © 2011 JLG Industries.

340AJ ARTICULATING BOOM LIFT

PERFORMANCE:

Platform Height (max)	10.33m
Working Height	12.33m
Platform Rotation angle	180°
Jib Raise Angle	+84°
Jib Lower Angle	-60°
Jib Articulation Range	144°
Maximum Horizontal Outreach	6.07m
Up and Over Outreach	5.18m
Platform Capacity	230kg
Slewing Angle	355° non-continuous

DIMENSIONS:

Stowed Length	5.52m (3.98m with jib stowed)
Stowed Height	2.0m (2.16m with jib stowed)
Overall Width	1.93m
Wheelbase	1.87m
Ground Clearance	0.237m
Platform Width	0.76m
Platform Length	1.52m
Overall Jib Length	1.22m
Tailswing	0.05m
Axle Oscillation	Standard

POWER:

Power Source	Diesel
Engine Make	Kubota
Engine Model	D1105
Engine Power	17.8kW

TRAVEL:

Tyre Size	30x10-18FA
Tyre Type	Non-marking, Solid Flex Cushion
Inside Turn Radius	1.52m
Outside Turn Radius	3.96m
Gradeability with Four Wheel Drive	45%
Drive Speed Four-Wheel Drive	4.98km/h
Maximum Ground Bearing Pressure	10.6kg/cm ²

WEIGHTS AND CAPABILITIES:

Fuel Tank Capacity	45 Ltr
Hydraulic Tank Capacity	75 Ltr
GWW	4,400kg